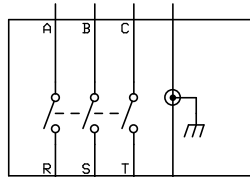
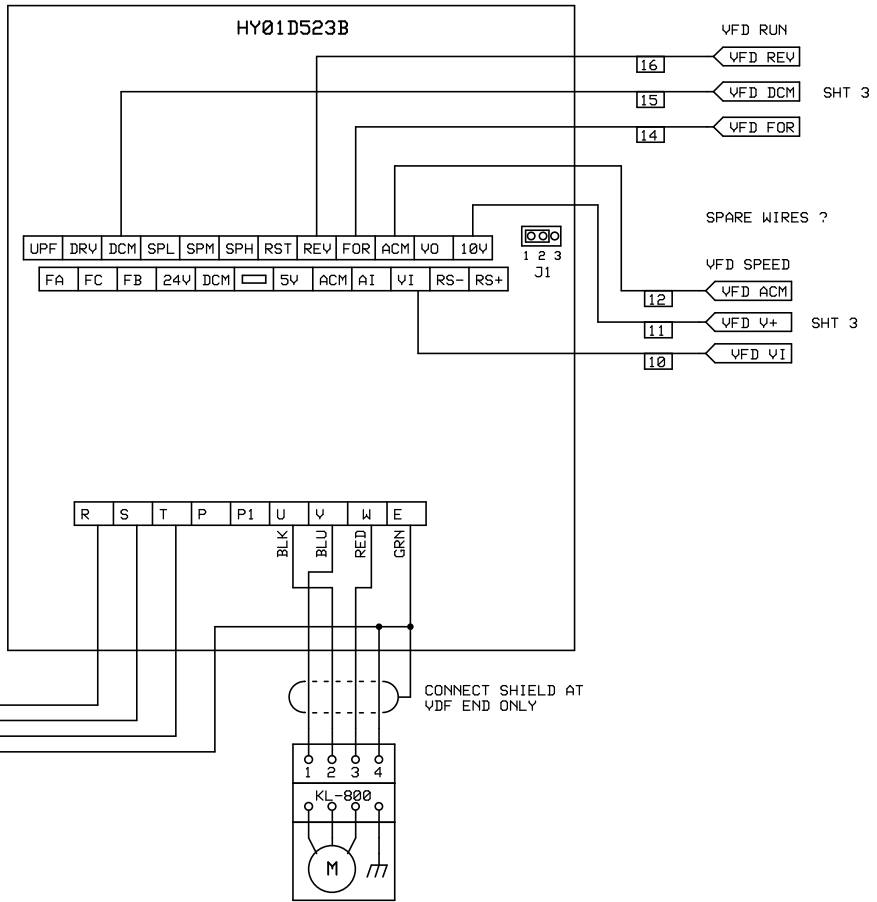
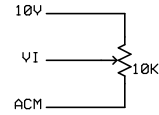


3 PH 208 VAC 15A



DISCONNECT SWITCH

COMMISSIONING TEST POT



Parameter settings

Frequency - Voltage Setup

PD003	400	Main frequency
PD004	400	Base frequency
PD005	400	Maximum operating frequency
PD006	2.5	Intermediate frequency
Default	PD007	0.5 Minimum frequency
Default	PD008	220 Maximum voltage
PD009	15	Intermediate voltage
PD010	8	Minimum voltage
PD011	100	Frequency lower limit
PD144	3000	Set RPM display

RUN Control Setup

PD001	1	Source of RUN command
PD044	01	FOR = RUN input

Speed Reference Setup

PD002	1	Source of Operating frequency
PD070	0	Analog input voltage range
Default	PD071	20 Analog filtering constant
**	PD072	470 Higher Analog frequency
PD073	100	Lower Analog frequency
Default	PD074	0 Bias direction at Higher Frequency
Default	PD075	0 Bias direction at Lower frequency
Default	PD076	0 Analog Negative Bias Reverse

** This setting allows the analog voltage from the MX4660 to be 0 to 8.5V

VFD

New X-Carve CNC

Turn Wright Machine Works

J0

Rev 4.0

NOV/20/2018

Page 1 of 4