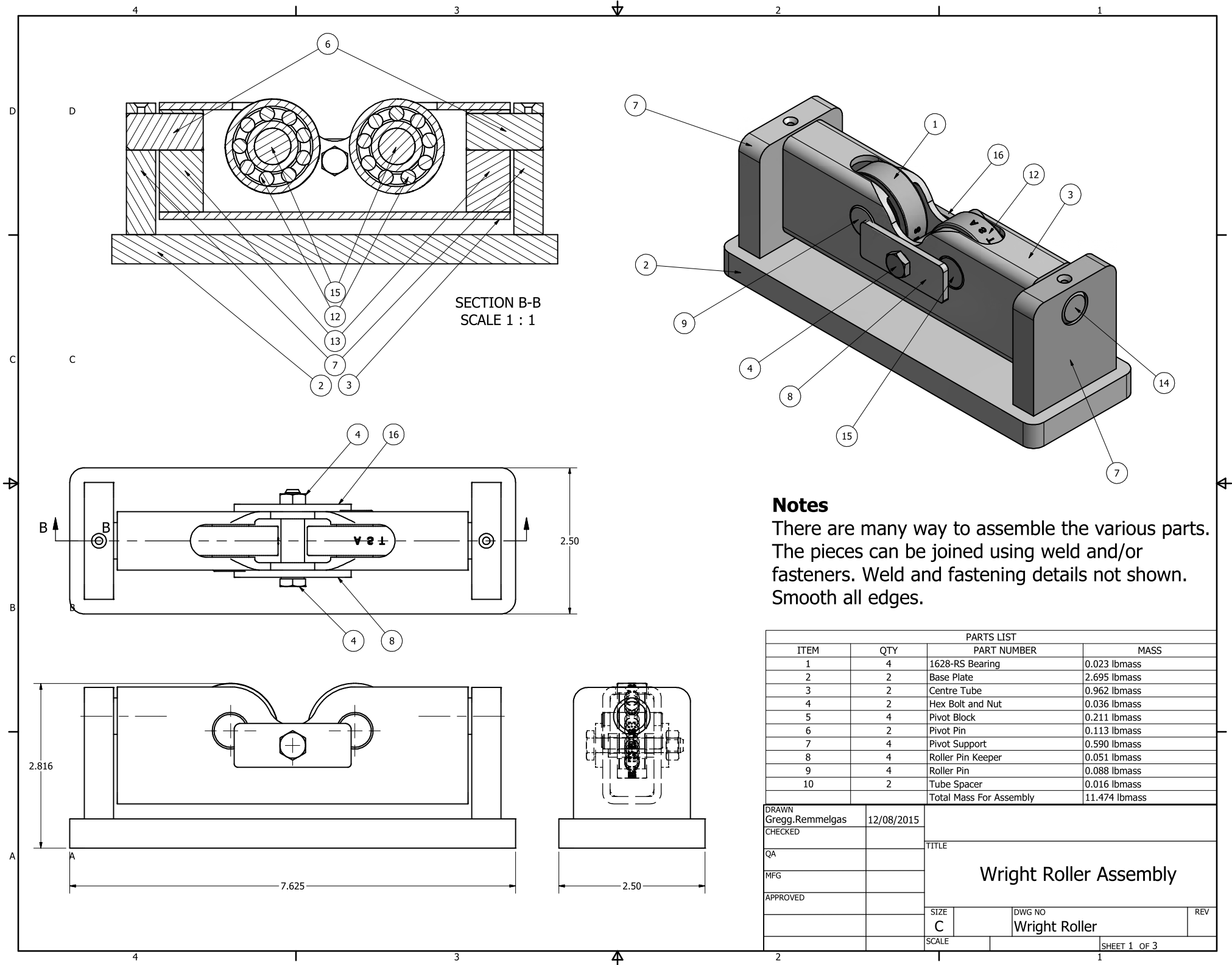


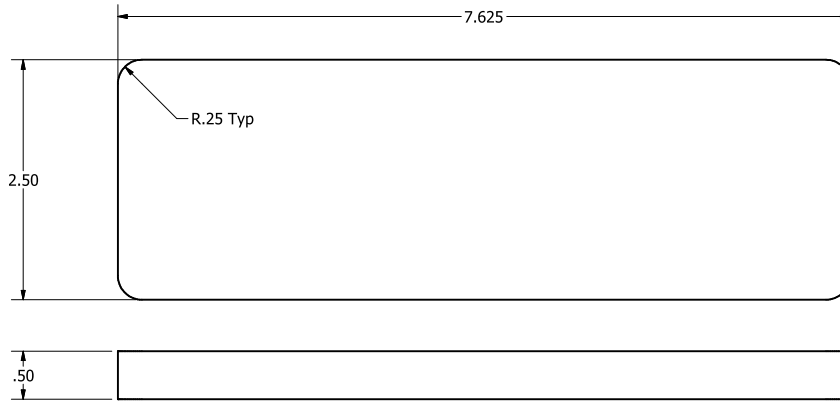
PDF made in CorelDraw X6 by Noel Richard

Conception par : **Keith Fenner**
 Conception by :
 791 Main Street
 West Dennis, Ma. 02670
 Email: turnwrightmachine@comcast.net
 Phone: 508-394-0724

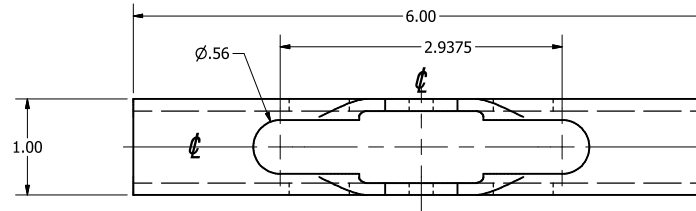
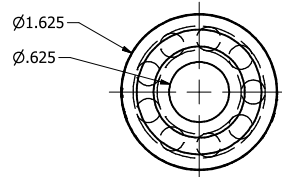
Two sets of drawings
The first by Gregg Remmelgas
The second by Keith E. Fenner

Copyright © 2015
 Droits d'auteur © 2015

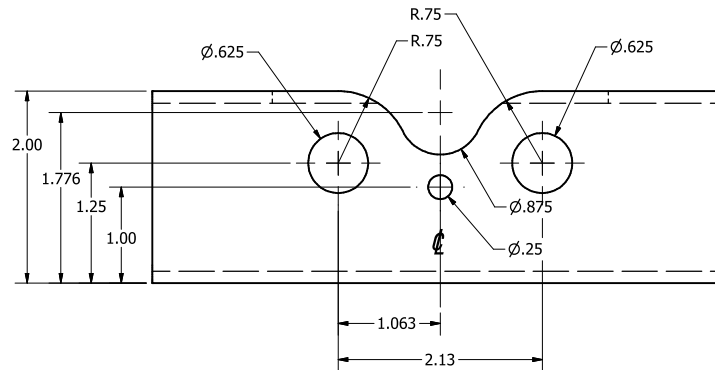
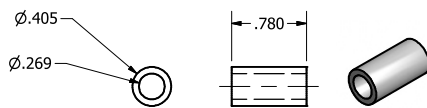




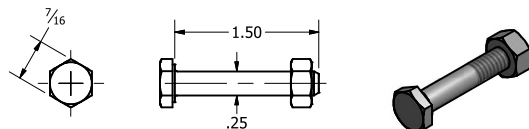
PARTS LIST			
ITEM	QTY	PART NUMBER	DESCRIPTION
2	2	Base Plate	7.625 x 2.5 x .5 Plate CRS



PARTS LIST			
ITEM	QTY	PART NUMBER	DESCRIPTION
1	4	AST_Bearings_1628-2RS	



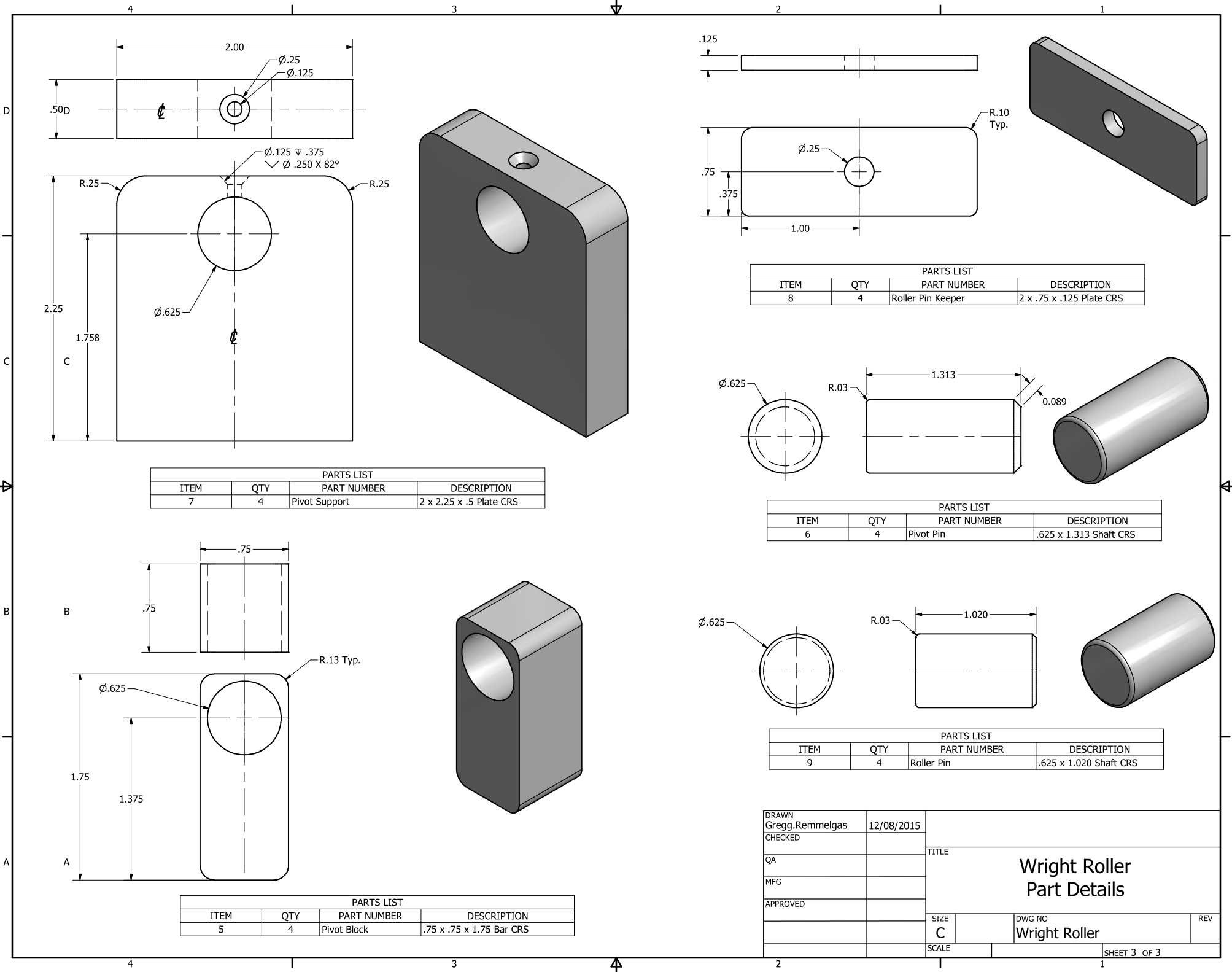
PARTS LIST			
ITEM	QTY	PART NUMBER	DESCRIPTION
10	0.780 in x 2 1.56 in	ASME B36.10M Pipe 1/8 - Schedule 40 - .78	Welded and Seamless Wrought Steel Pipe



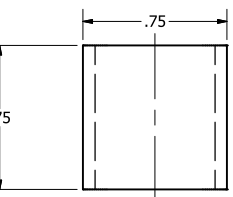
PARTS LIST			
ITEM	QTY	PART NUMBER	DESCRIPTION
3	2	Centre Tube	1 x 2 x .125 x 6" lg Tube

PARTS LIST			
ITEM	QTY	PART NUMBER	DESCRIPTION
4	2	ANSI B18.2.1 - 1/4-20 UNC - 1.5	Hex Cap Screw
4			Hex Nuts (Inch Series) Hex Nut ANSI B18.2.2 - 1/4 - 20

DRAWN Gregg.Rommelgas	12/08/2015	TITLE Wright Roller Part Details	
CHECKED			
QA			
MFG			
APPROVED		SIZE C	DWG NO Wright Roller
		SCALE	REV
			SHEET 2 OF 3

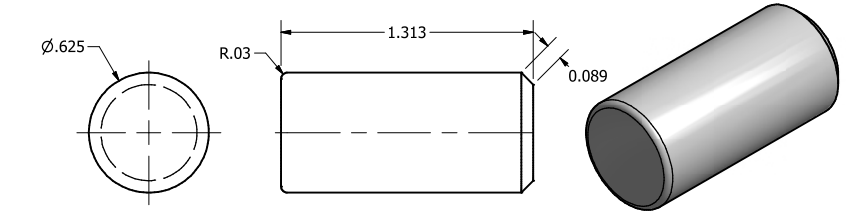


PARTS LIST			
ITEM	QTY	PART NUMBER	DESCRIPTION
7	4	Pivot Support	2 x 2.25 x .5 Plate CRS

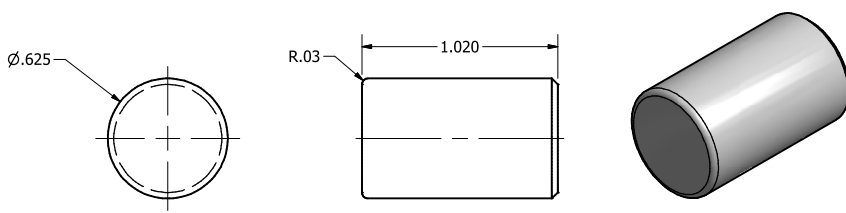


PARTS LIST			
ITEM	QTY	PART NUMBER	DESCRIPTION
5	4	Pivot Block	.75 x .75 x 1.75 Bar CRS

PARTS LIST			
ITEM	QTY	PART NUMBER	DESCRIPTION
8	4	Roller Pin Keeper	2 x .75 x .125 Plate CRS

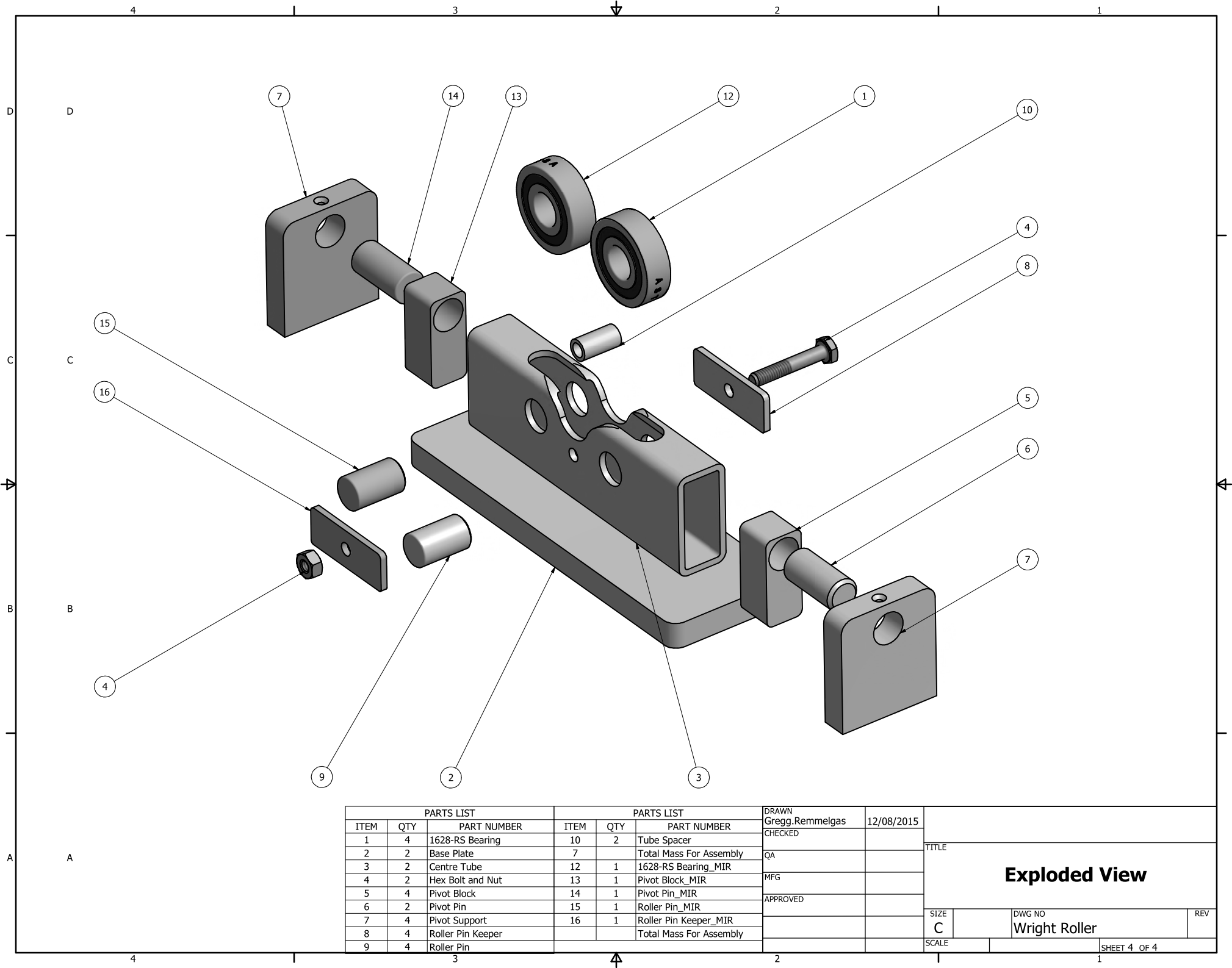


PARTS LIST			
ITEM	QTY	PART NUMBER	DESCRIPTION
6	4	Pivot Pin	.625 x 1.313 Shaft CRS



PARTS LIST			
ITEM	QTY	PART NUMBER	DESCRIPTION
9	4	Roller Pin	.625 x 1.020 Shaft CRS

DRAWN Gregg.Rommelgas	12/08/2015	TITLE Wright Roller Part Details		
CHECKED				
QA				
MFG				
APPROVED		SIZE C	DWG NO Wright Roller	REV
		SCALE	SHEET 3 OF 3	



PARTS LIST			PARTS LIST			DRAWN Gregg.Rommelgas		12/08/2015		TITLE Exploded View		
ITEM	QTY	PART NUMBER	ITEM	QTY	PART NUMBER	CHECKED						
1	4	1628-RS Bearing	10	2	Tube Spacer	QA						
2	2	Base Plate	7		Total Mass For Assembly	MFG						
3	2	Centre Tube	12	1	1628-RS Bearing_MIR	APPROVED				SIZE C		
4	2	Hex Bolt and Nut	13	1	Pivot Block_MIR					DWG NO Wright Roller		
5	4	Pivot Block	14	1	Pivot Pin_MIR					REV		
6	2	Pivot Pin	15	1	Roller Pin_MIR					SCALE		
7	4	Pivot Support	16	1	Roller Pin Keeper_MIR					SHEET 4 OF 4		
8	4	Roller Pin Keeper			Total Mass For Assembly							
9	4	Roller Pin										

The Wright Roller Kit Material List:

Part #1, Center Tube 1" X 2" X 1/8" wall Box Tube Qt. 2 ea

Part #2, Base Plate 1/2" X 2 1/2" X 7 5/8" Lg. CR Flat Qt. 2 ea

Part #3, Pivot Support 1/2" X 2" X 2 1/4" Lg. CR Flat Qt. 4 ea

Part #4, Pivot Block 3/4" Sq. X 1 3/4" Lg. CR Qt. 4 ea

Part#5, Pivot Pin 5/8" CR Round X 1 3/8" Lg. Qt. 4 ea

Part #6, Roller Pin 5/8" CR Round X 1 1/16" Lg. Qt. 4ea

Part #7, Roller Pin Keeper 1/8" X 3/4" X 2" Lg. Qt. 4ea

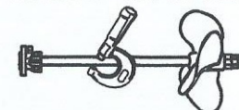
Part #8, Tube Spacer 1/8" SCH. 80 Pipe X 13/16" Lg. Qt. 2 ea

Part # 9, Roller Bearing # 1628RS Qt. 4 ea

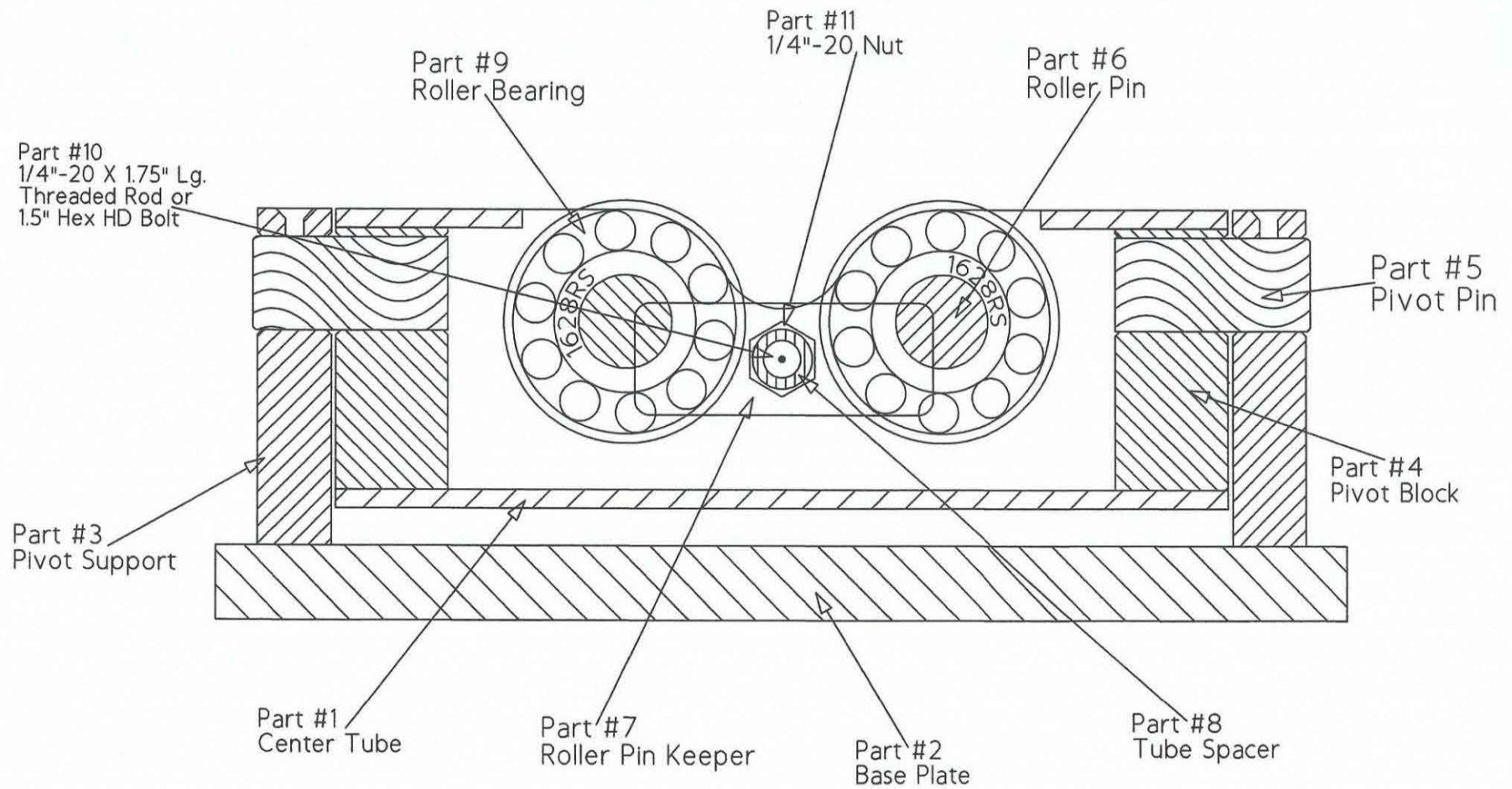
Part #10, 1/4" - 20 X 1 1/2" Lg. Hex HD Cap/Scr Qt. 2 ea

Part #11, 1/4" - 20 Hex Nuts Qt. 2ea

TURN WRIGHT MACHINE WORKS

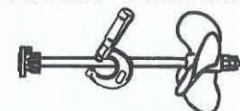


FIRST DESIGNED AND MANUFACTURED IN 1986 BY KEITH E. FENNER
CARTOON ASSISTED DRAWING ON 08/01/2015 BY KEITH E. FENNER

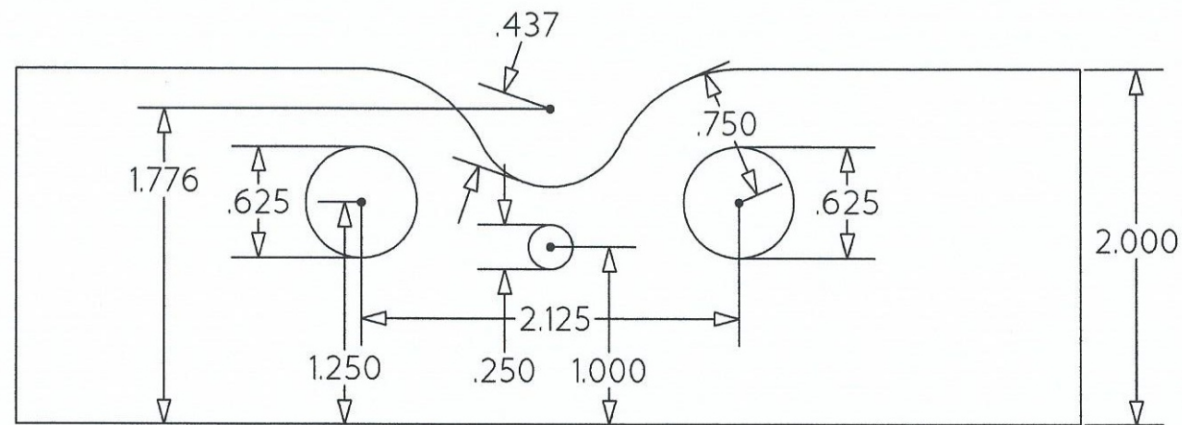
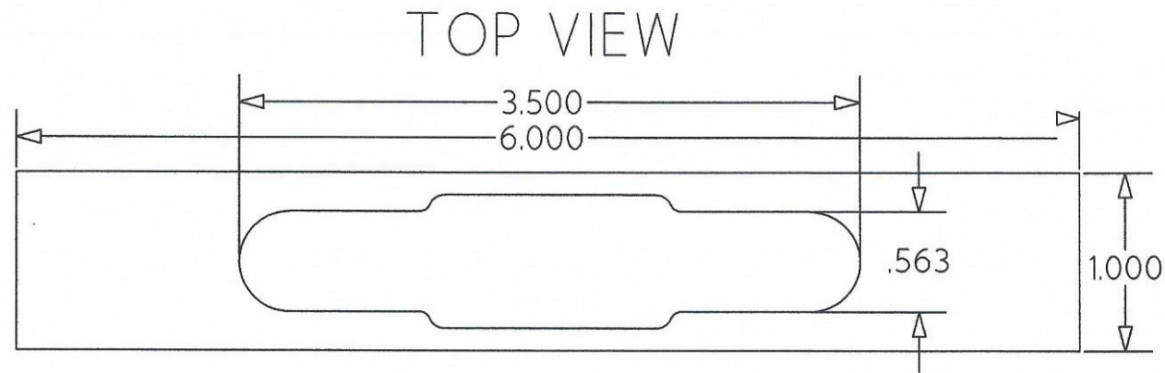


The Wright Roller Cut Away View & Part #'s

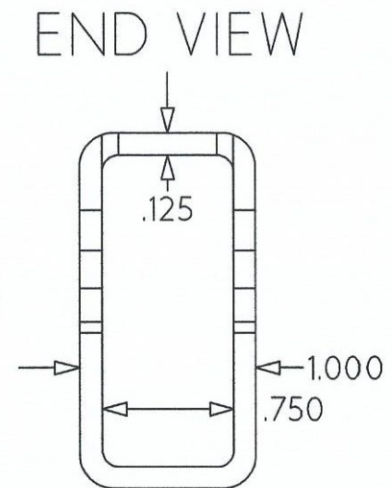
TURN WRIGHT MACHINE WORKS



FIRST DESIGNED AND MANUFACTURED IN 1986 BY KEITH E. FENNER
CARTOON ASSISTED DRAWING ON 08/01/2015 BY KEITH E. FENNER

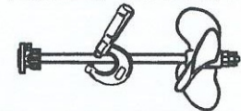


FWD. VIEW



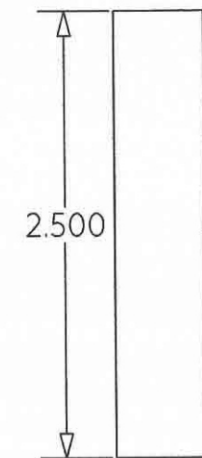
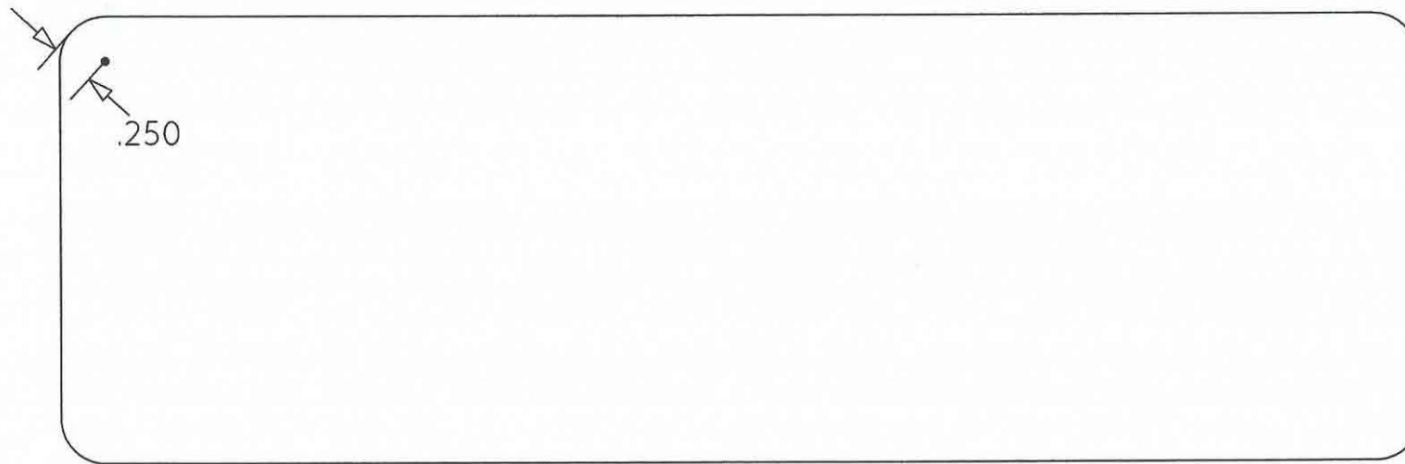
Part #1 Center Tube

TURN WRIGHT MACHINE WORKS

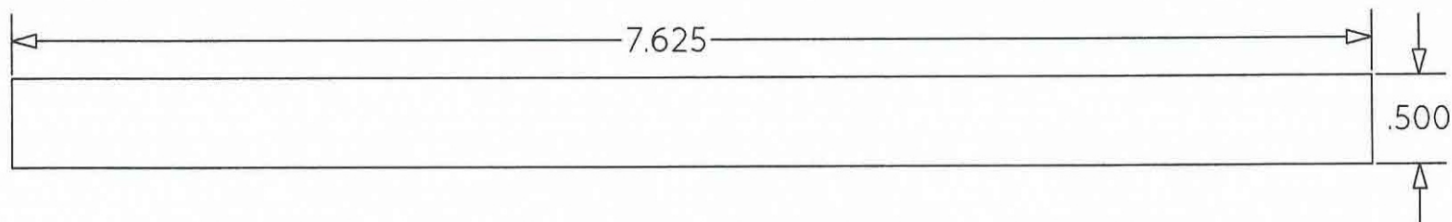


FIRST DESIGNED AND MANUFACTURED IN 1986 BY KEITH E. FENNER
CARTOON ASSISTED DRAWING ON 08/01/2015 BY KEITH E. FENNER

TOP VIEW



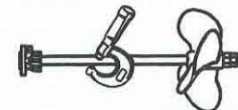
END VIEW



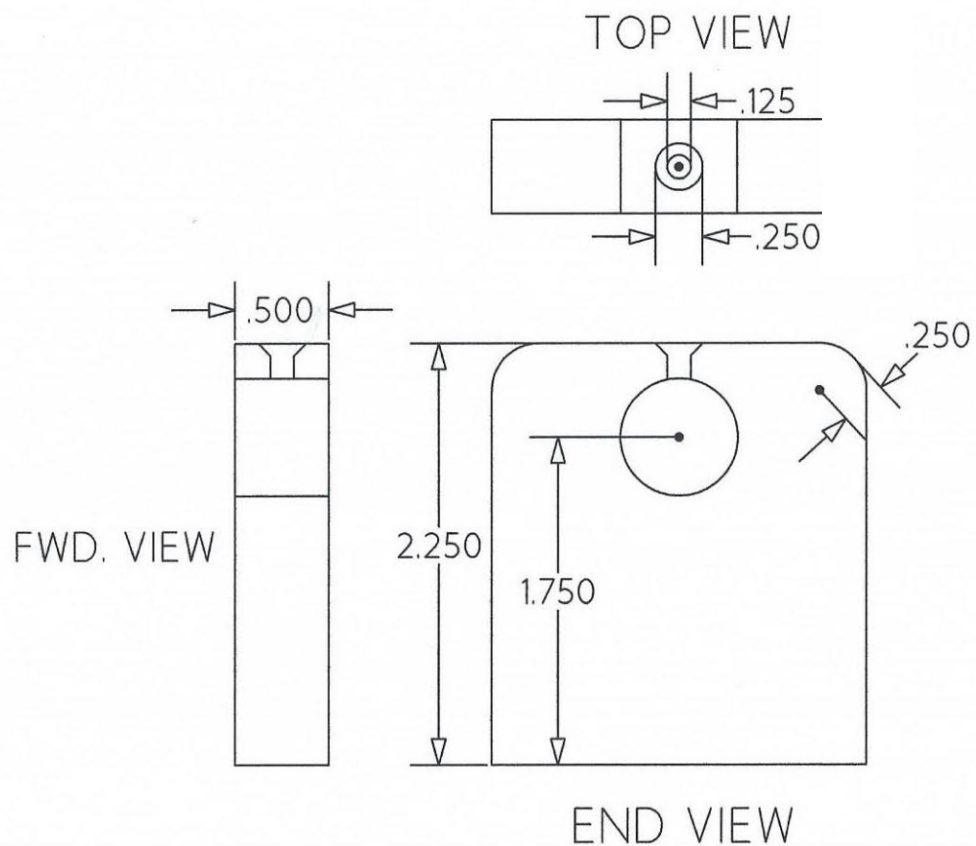
FWD. VIEW

Part #2
Base Plate

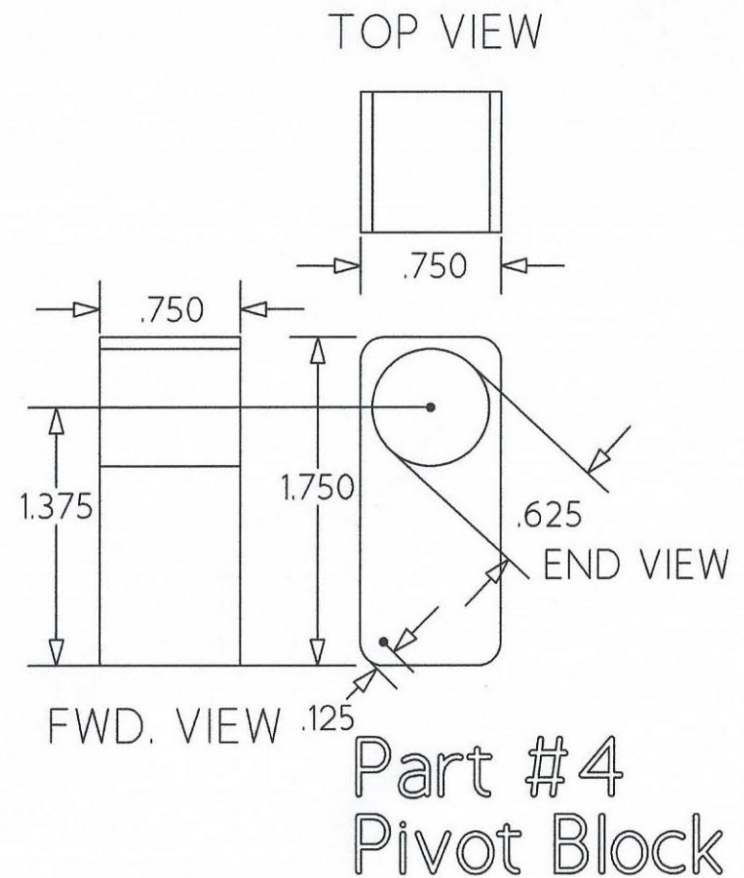
TURN WRIGHT MACHINE WORKS

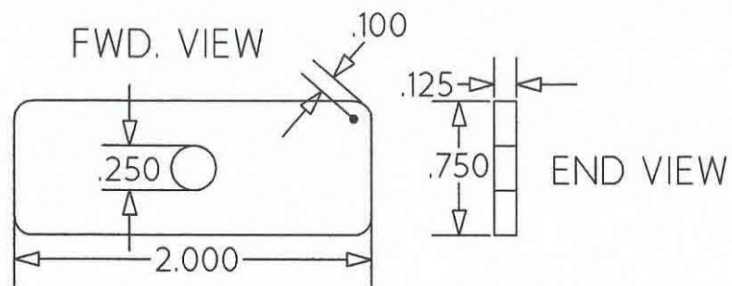


FIRST DESIGNED AND MANUFACTURED IN 1986 BY KEITH E. FENNER
CARTOON ASSISTED DRAWING ON 08/01/2015 BY KEITH E. FENNER

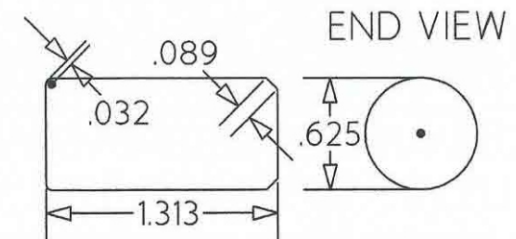


Part #3
Pivot Support

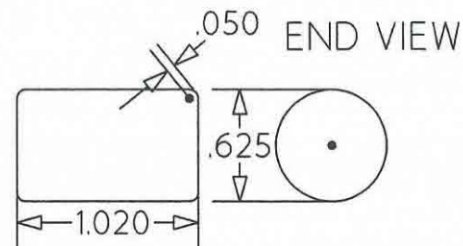




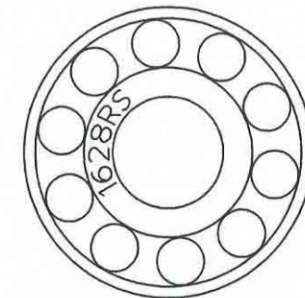
Part #7
Roller Pin Keeper



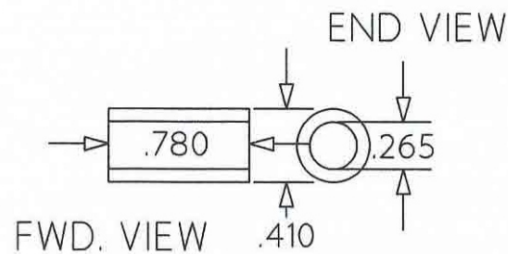
Part #5
Pivot Pin



Part #6
Roller Pin

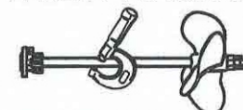


Part #9
Roller Bearings



Part #8
Tube Spacer

TURN WRIGHT MACHINE WORKS



FIRST DESIGNED AND MANUFACTURED IN 1986 BY KEITH E. FENNER
CARTOON ASSISTED DRAWING ON 08/01/2015 BY KEITH E. FENNER